

# Frog Pond

## History ~

The Frog Pond property was farmed for many years by the former Whiting Dairy. The dam was built in the early 1900s to make a farm pond, also used for skating during the winter carnivals of the 1920s and '30s.

## Key Features ~

After crossing the bridge from Whiting Hill parking area, the hiker encounters a short steep hill that leads to an open area. To the left is a short trail that runs along a gravel ridge. Geologists have identified this ridge as an Esker. Eskers were formed by glaciers during the last ice age. Glaciers acted as bulldozers grinding and pushing gravel ahead of the them. The esker is the gravel mound left behind when they melted.

The next feature the hiker encounters if they turn right and follow the remains of the Esker is an earthen dam. The dam has a concrete spillway that allows water to flow out during high water events. During low water a circle of stones can be seen underwater near the southwest end of the pond that are the remains of a well. Beyond the dam is a large hay field with views to the south and east.

## Flora/Fauna ~

The area surrounding the pond to the west, north and east is comprised of mixed hard and soft wood. The hiker will notice a large number of large White Pine (*Pinus strobus*). Mixed in with the pines are Red Oak (*Quercus rubra*), and Red Maple (*Acer rubrum*). Along the Esker, you will find a stand of Beech (*Fagus grandifolia*). Along the edges of the pond, you will find various alders and native grape vines. The northeast end of the pond is slowly filling in with mosses. A large number of bird species use the pond. Some nest around it and some use it as a stop on their migrations, including Canada geese.

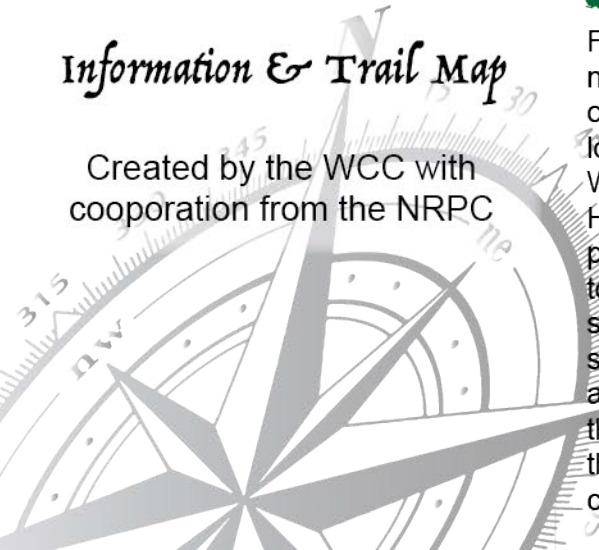
A flock of turkeys can often be seen grazing on the south field, especially on the hill to the East, below the woods. Red-wing Blackbirds nest on the fields in summer, and there is evidence of Deer year 'round.

## Description ~

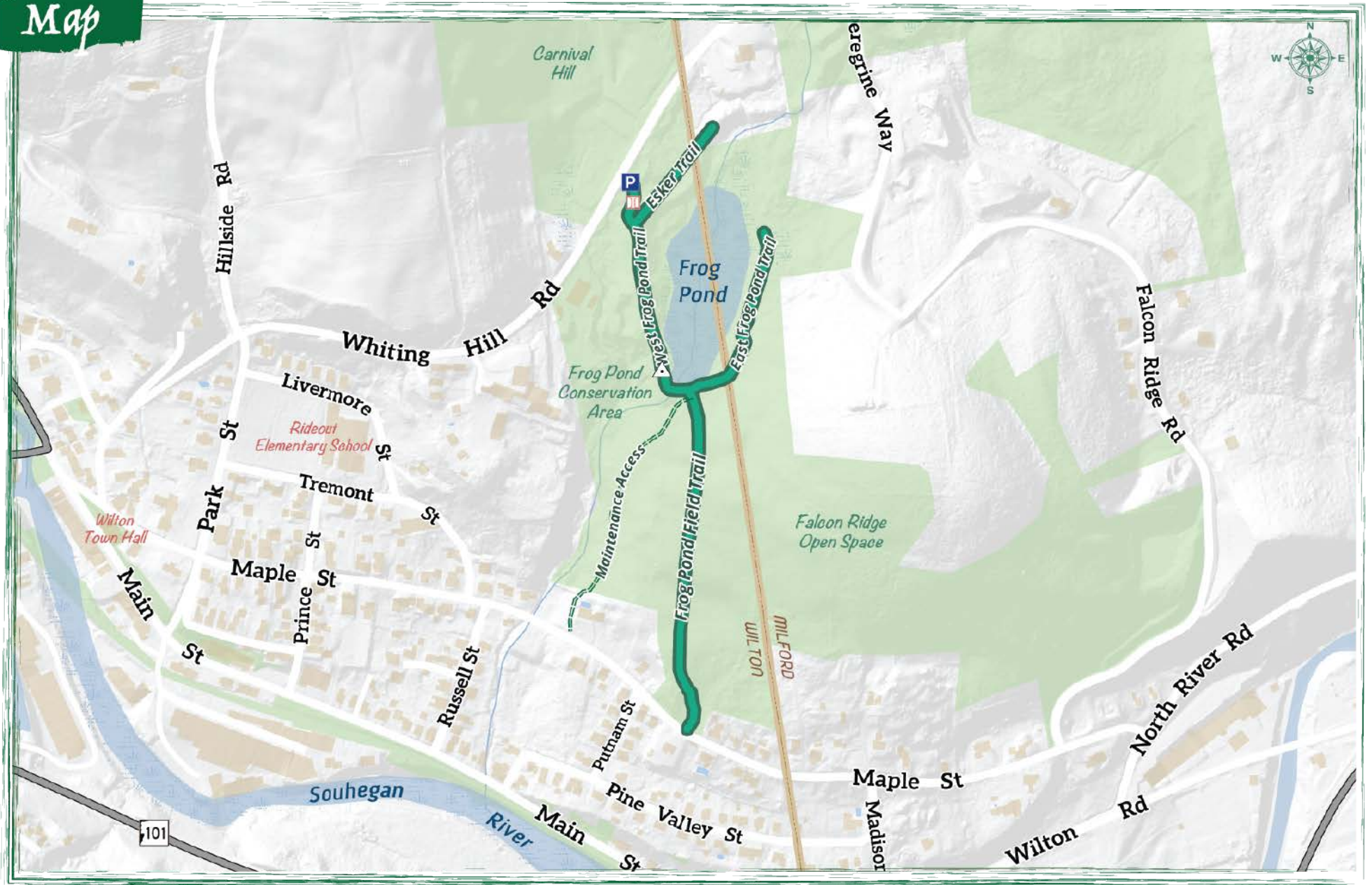
Frog Pond is a manmade pond constructed nearly a hundred years ago to provide a source of water for a number of endeavors. A walking loop from downtown via access by Maple St. and Whiting Hill Rd. is about 2 miles around. Whiting Hill Rd. provides the best access, with a small parking area. Frog Pond provides an ideal place to hike, bird watch, walk a dog, identify trees and shrubs, and in the winter, ice skate, cross ski or snowshoe. Note water levels vary due to season and weather conditions. The property straddles the town line 50/50 between Wilton and Milford, the Wilton portion being purchased for the town's citizens in 2005.

## Information & Trail Map

Created by the WCC with cooperation from the NRPC



# Map



## Key

|  |                    |  |                   |
|--|--------------------|--|-------------------|
|  | Trail              |  | Conservation Land |
|  | Maintenance Access |  | Open Water        |
|  | Parking Area       |  | Wetland           |
|  | Dam                |  | Stream            |
|  | Bridge             |  |                   |

## Restrictions ~



Open Dawn to Dusk



Clean Up & Remove Pet Waste



Carry In Carry Out



No Motor Vehicles



No Fires or Open Flame