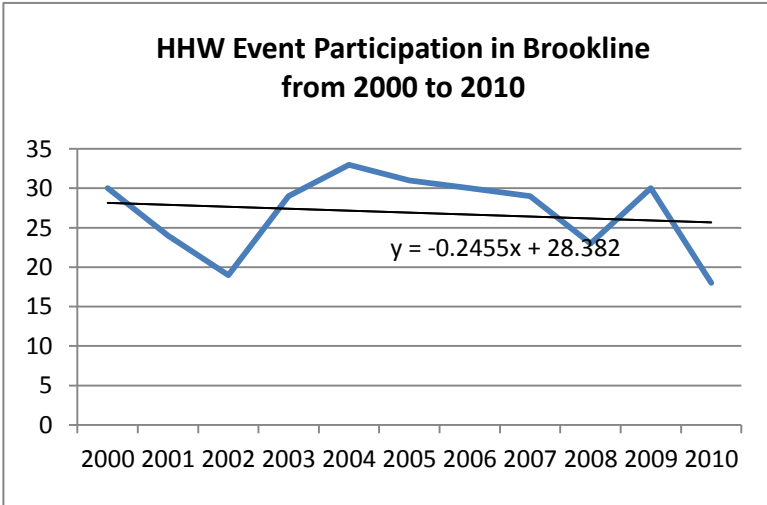
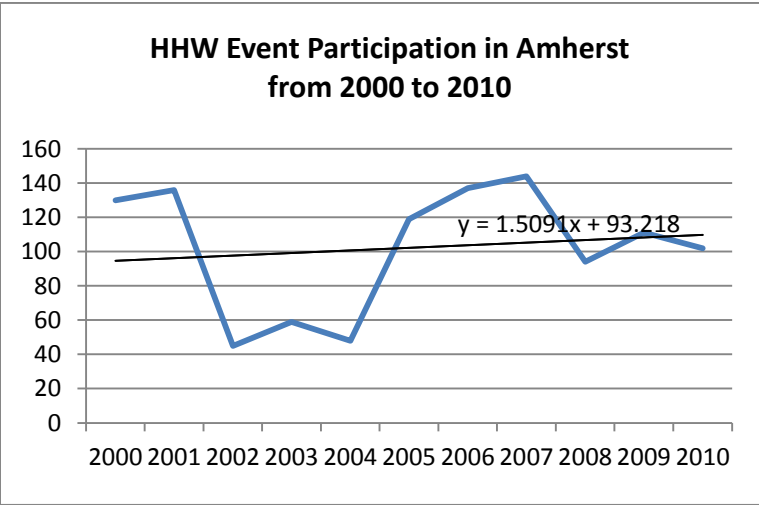
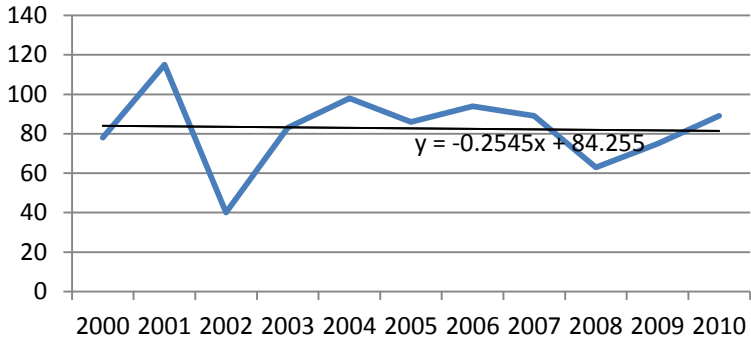


Total Household Participation

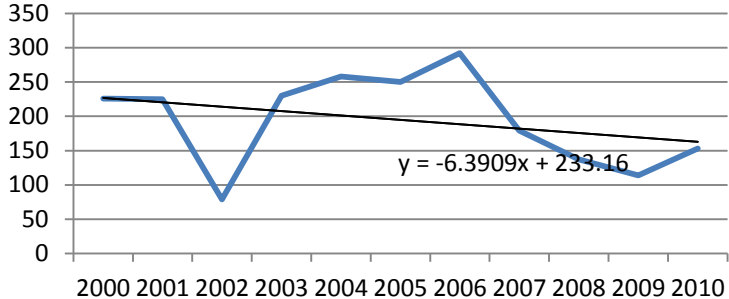
	2000	2001	2002	2003	2004	2005	2006	2007	2008	2009	2010
Amherst	130	136	45	59	48	119	137	144	94	111	102
Brookline	30	24	19	29	33	31	30	29	23	30	18
Hollis	78	115	40	83	98	86	94	89	63	75	89
Hudson	226	225	79	230	258	250	292	179	137	114	153
Litchfield	65	64	19	72	36	47	32	21	15	55	34
Merrimack	130	190	97	105	255	180	186	181	83	122	170
Milford	110	56	40	78	112	82	134	187	112	116	102
Mont Vernon	30	26	13	18	17	20	16	11	13	25	13
Nashua	1135	1181	397	864	970	945	792	471	449	485	478
Pelham	50	69	47	93	89	71	86	48	70	47	52
Windham	92	118	80	116	166	100	116	122	149	127	154
TOTAL	2076	2204	876	1747	2082	1931	1915	1482	1208	1307	1365



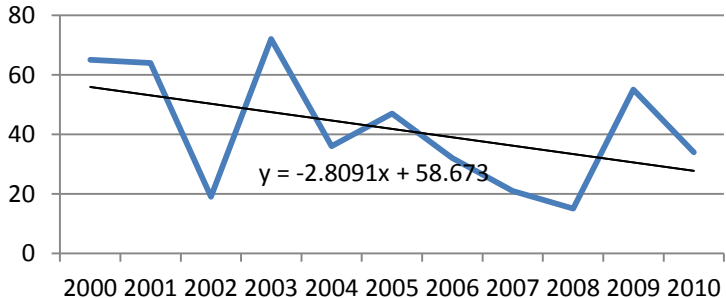
HHW Event Participation in Hollis from 2000 to 2010



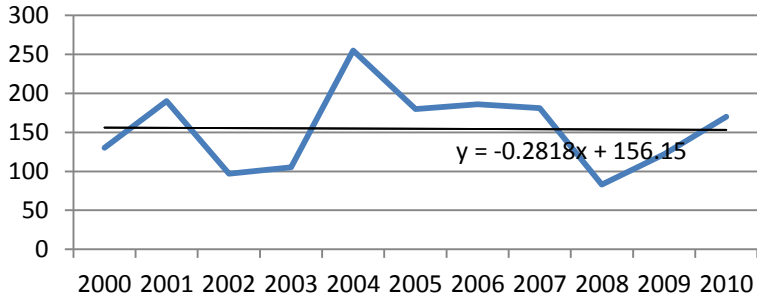
HHW Event Participation in Hudson from 2000 to 2010



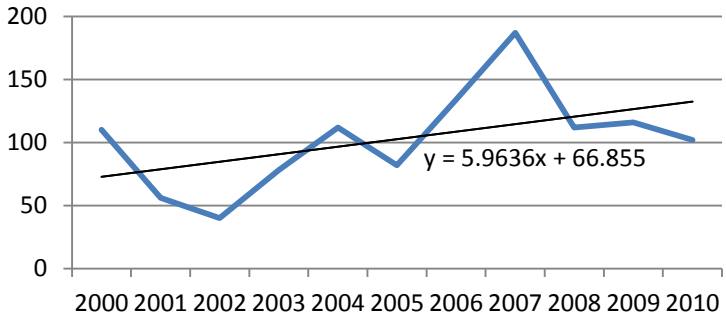
HHW Event Participation in Litchfield from 2000 to 2010



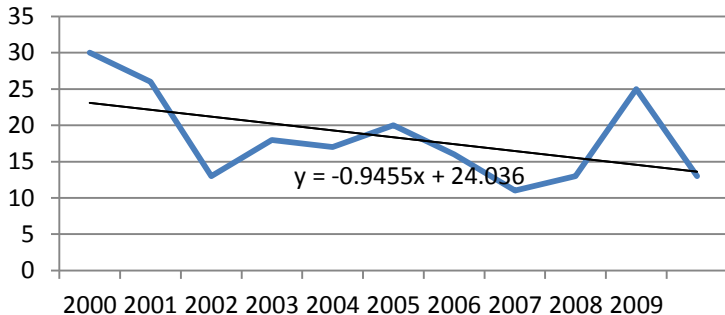
HHW Event Participation in Merrimack from 2000 to 2010



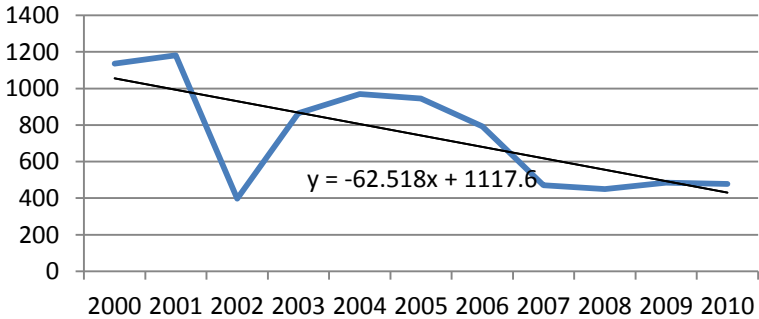
HHW Event Participation in Milford from 2000 to 2010



HHW Event Participation in Mont Vernon from 2000 to 2010



HHW Event Participation in Nashua from 2000 to 2010



HHW Event Participation in Pelham from 2000 to 2010

