



Helping Communities face the challenge and impacts of growth while maintaining community character and a sense of place.

FACT SHEET: 14

Streetscape ~ Landscaping

iTRaC is the Nashua Regional Planning Commission's approach to community planning that focuses on integrating transportation, land use and environmental planning. The program was developed to assist communities in dealing with the challenges of growth in a coordinated way that sustains community character and a sense of place.

Streetscape refers to the elements within and along the street right-of-way that define its appearance, identity, and functionality. These elements include adjacent buildings and land uses, street furniture, landscaping, trees, sidewalks, and pavement treatments.

www.greatstreetsstlouis.net/

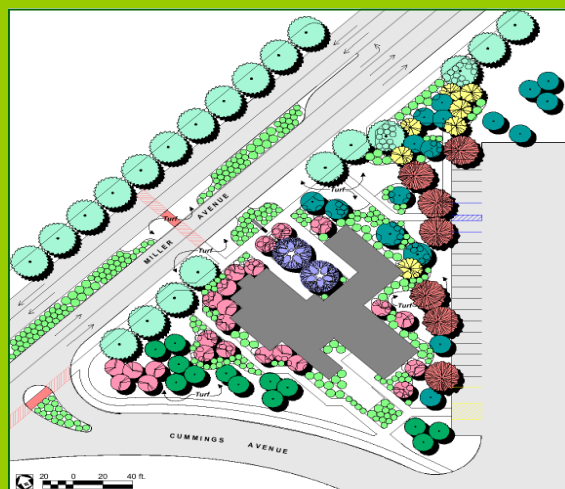
Streetscapes, such as colorful landscaped medians or brick road surfaces with tree-lined shoulders, enhance local aesthetics. They may also serve a functional purpose; awnings in a downtown shopping district filter sunlight, while bike lanes, bike racks, and street furniture encourage and facilitate non-motorized transportation.

Streetscape



Downtown Nashua, with its brick paved sidewalks and tree lined streets, provides an example of a nicely designed streetscape. Canvas awnings shade sidewalk seating embellished with window boxes and potted plants. These outdoor amenities cater to pedestrians, whose presence is necessary for a thriving and vibrant downtown.

Landscaping



www.itrac-brooks.af.mil/dg/011andhc-aps/Design/003andhc-aps/lanesna.htm

Landscaping is more than simply using objects or plants to fill space or create transitions. In commercial and residential development, it often involves a creative and thoughtful design process. An emerging trend is to utilize native plants and trees in landscapes. This eliminates proliferation of invasive species, protects soils, minimizes energy and water usage, provides habitat, and supports the local economy. Looking to nature for guidance is at the heart of integrated landscaping, which is a holistic approach that incorporates multilayered plant systems. Capturing and treating stormwater is another component of good design. Properly placed vegetation can reduce the velocity of runoff and filter sediment and pollutants before they reach surface water bodies.



Nashua Regional
Planning Commission

115 Main Street
PO Box 847
Nashua, NH 03061

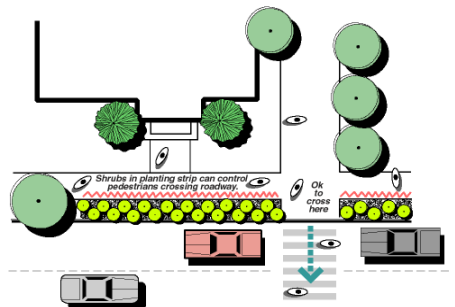
Phone: (603) 883-0366
Fax: (603) 883-6572
www.nashuarpc.org

Who is involved in Landscape & Streetscape Design?

On complex projects, environmental, civil and transportation consultants may collaborate on a streetscape or landscape design. In commercial and increasingly in residential developments, a landscape architect is often employed. The American Society of Landscape Architects (ASLA) defines landscape architecture as, "the profession which applies artistic and scientific principles to the research, planning, design and management of both natural and built environments." Work can also be done by a landscape designer, particularly when the site engineering has been done by a certified engineer. Landscape designers have a strong working knowledge of plants and are an excellent resource for selecting plants that are best suited for the particular location.

NH LAW
RSA 310-A:145
Licensure Required
No person shall practice landscape architecture in this state, except as permitted in RSA 310-A:160, without a landscape architect's license issued under this subdivision.

Vegetation as Pedestrian Barriers

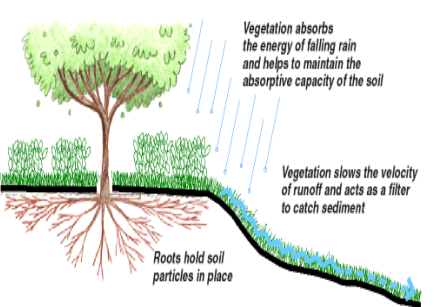


<http://www.afcee.brooks.af.mil/Idp/4011LandscapeDesign/c031landscapePlanning.html>

Local Streetscape & Landscaping



Absorption & Filtering Stormwater



<http://www.afcee.brooks.af.mil/Idp/4011LandscapeDesign/c031landscapePlanning.html>

Benefits of Streetscape and Landscaping

Economic Development

An attractive town center is inviting to new and long-time residents, visitors, and business owners.

Healthy Communities

Community design can promote interaction among citizens and help create safe destinations for pedestrians and cyclists.

Pollution Reduction

Trees, greenery, & parks absorb air and water pollutants while providing shade and a cooling effect on public spaces and buildings.

Traffic Calming

Street furniture, raised crosswalks, and other elements of the pedestrian landscape increase driver awareness.



For more details on this topic or an overview of the entire iTRaC program, visit www.nashuarpc.org/itrac or contact Camille Pattison, iTRaC Program Manager, at camillep@nashuarpc.org or 603-883-0366 x14. Nashua Regional Planning Commission in partnership with the NH Department of Transportation & the NH Office of Energy and Planning.