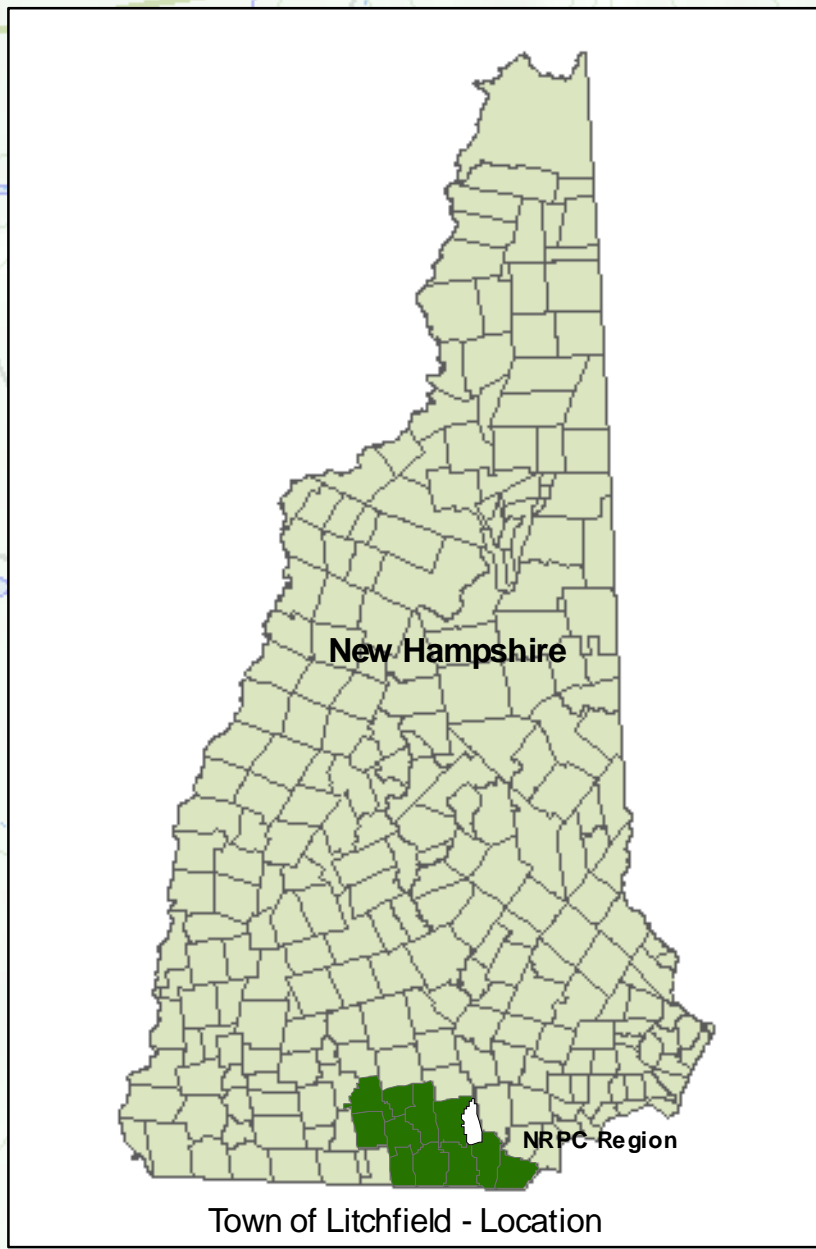


Town of Litchfield, NH - Street Map & Town Facilities

May 2007



MAP DATA SOURCES

Road center line and bridge datasets are New Hampshire Department of Transportation data with ongoing improvements and updates provided by NRPC.

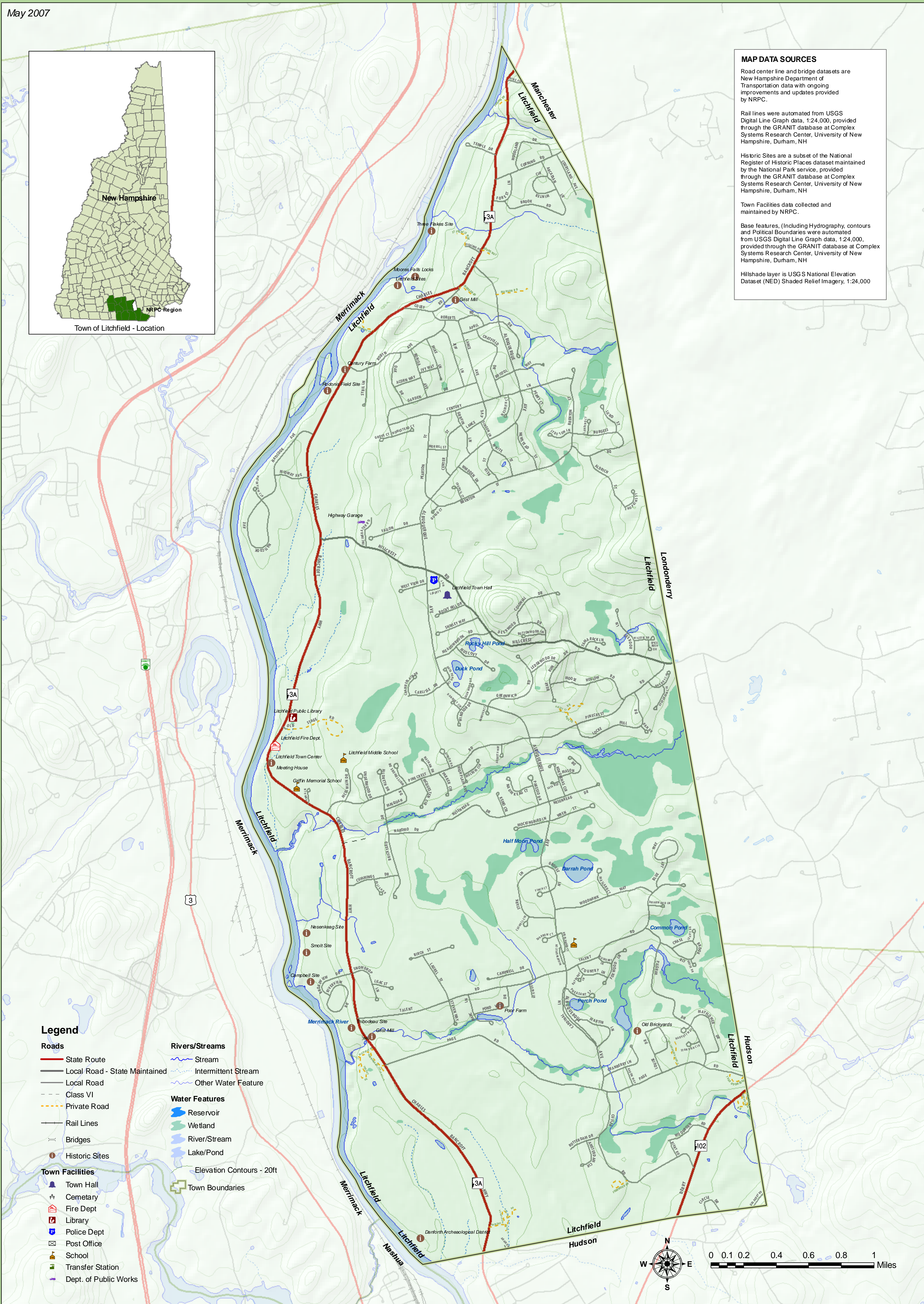
Rail lines were automated from USGS Digital Line Graph data, 1:24,000, provided through the GRANIT database at Complex Systems Research Center, University of New Hampshire, Durham, NH

Historic Sites are a subset of the National Register of Historic Places dataset maintained by the National Park Service, provided through the GRANIT database at Complex Systems Research Center, University of New Hampshire, Durham, NH

Town Facilities data collected and maintained by NRPC.

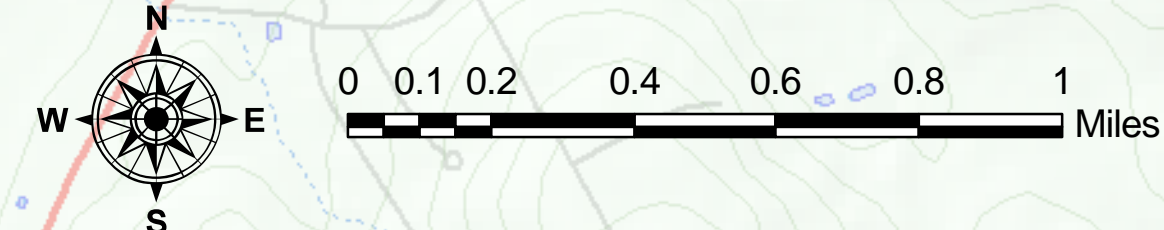
Base features, (Including Hydrography, contours and Political Boundaries) were automated from USGS Digital Line Graph data, 1:24,000, provided through the GRANIT database at Complex Systems Research Center, University of New Hampshire, Durham, NH

Hillshade layer is USGS National Elevation Dataset (NED) Shaded Relief Imagery, 1:24,000



Legend

- | | |
|---------------------------------|-----------------------------|
| Roads | Rivers/Streams |
| — State Route | — Stream |
| — Local Road - State Maintained | — Intermittent Stream |
| — Local Road | — Other Water Feature |
| — Class VI | |
| — Private Road | Water Features |
| — Rail Lines | — Reservoir |
| — Bridges | — Wetland |
| — Historic Sites | — River/Stream |
| | — Lake/Pond |
| Town Facilities | — Elevation Contours - 20ft |
| — Town Hall | — Town Boundaries |
| — Cemetary | |
| — Fire Dept | |
| — Library | |
| — Police Dept | |
| — Post Office | |
| — School | |
| — Transfer Station | |
| — Dept. of Public Works | |



Maps prepared by the Nashua Regional Planning Commission are for planning purposes only. NRPC uses data gathered from multiple sources at various scales of accuracy. No warranties, expressed or implied, are provided for the data herein, its use, or its interpretation.

Prepared by NRPC GIS, 05/07
Project Location: J:\GIS\Projects\Town_maps\Litchfield\Litchfield_Street_map_town_facilities.mxd



Nashua Regional Planning Commission
115 Main Street PO Box 847 Nashua, NH 03061
www.nashuarpc.org