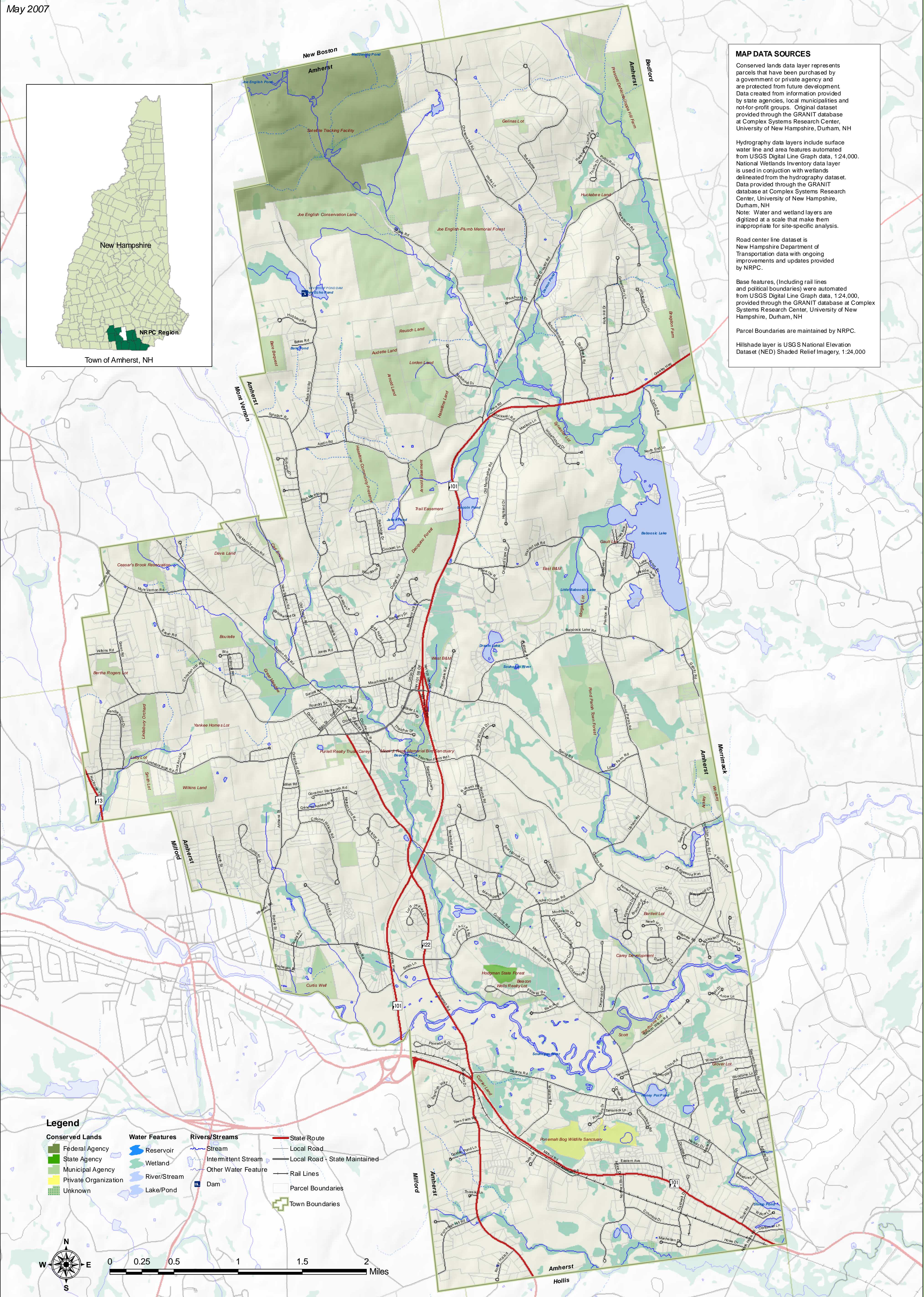


Town of Amherst, NH - Conserved Lands and Environmental Features

May 2007



MAP DATA SOURCES

Conserved lands data layer represents parcels that have been purchased by a government or private agency and are protected from future development. Data created from information provided by state agencies, local municipalities and not-for-profit groups. Original dataset provided through the GRANIT database at Complex Systems Research Center, University of New Hampshire, Durham, NH

Hydrography data layers include surface water line and area features automated from USGS Digital Line Graph data, 1:24,000. National Wetlands Inventory data layer is used in conjunction with wetlands delineated from the hydrography dataset. Data provided through the GRANIT database at Complex Systems Research Center, University of New Hampshire, Durham, NH

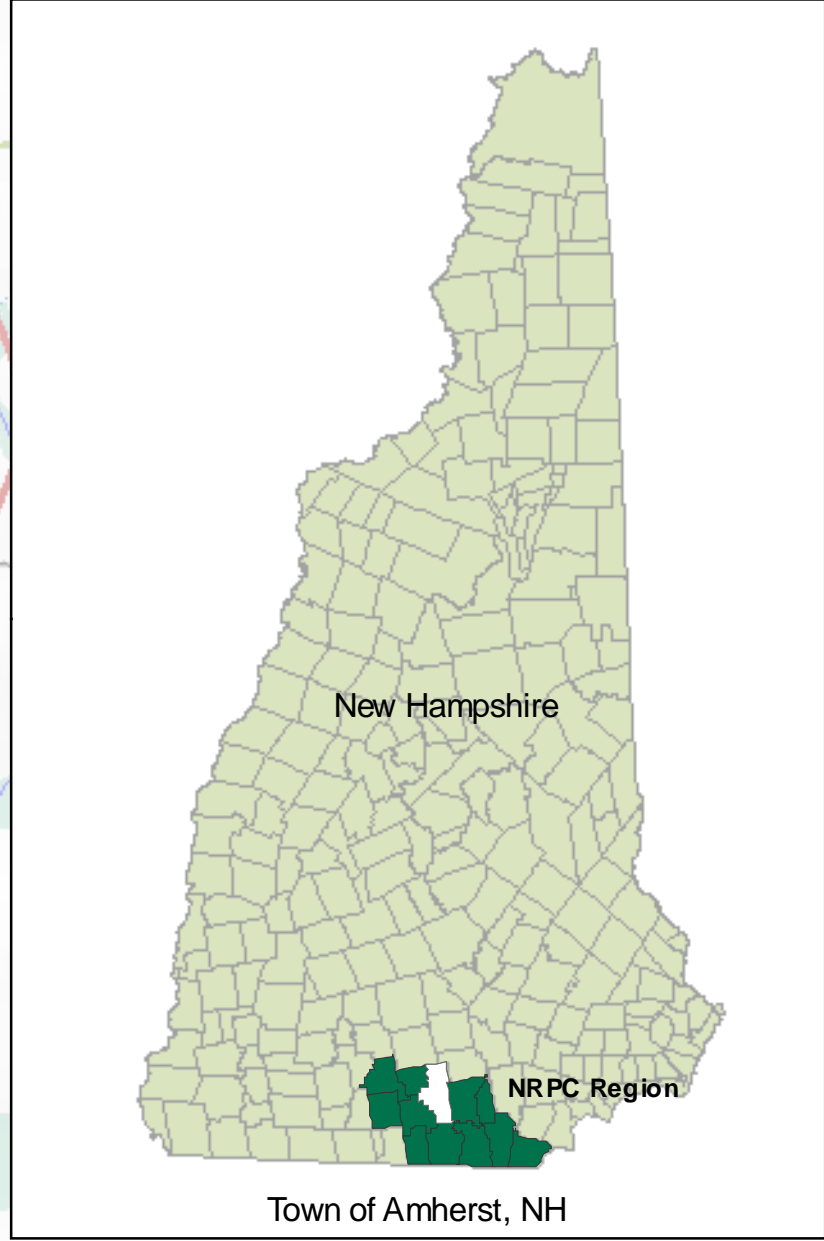
Note: Water and wetland layers are digitized at a scale that make them inappropriate for site-specific analysis.

Road center line dataset is New Hampshire Department of Transportation data with ongoing improvements and updates provided by NRPC.

Base features, (including rail lines and political boundaries) were automated from USGS Digital Line Graph data, 1:24,000, provided through the GRANIT database at Complex Systems Research Center, University of New Hampshire, Durham, NH

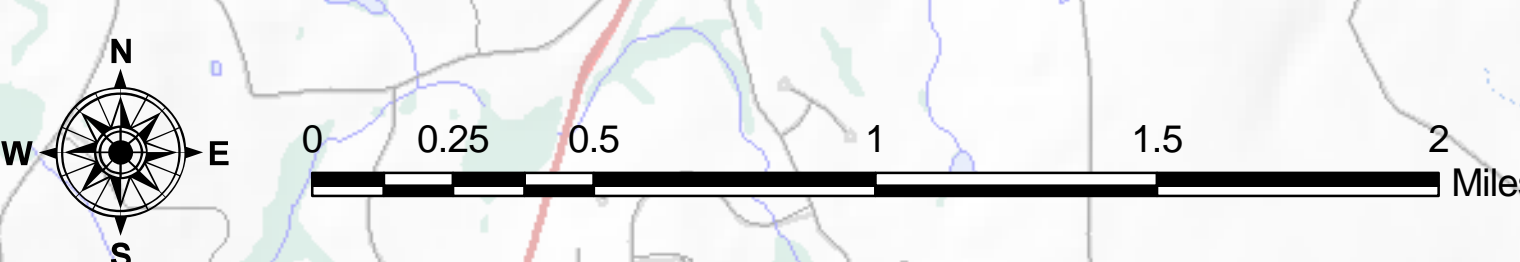
Parcel Boundaries are maintained by NRPC.

Hillshade layer is USGS National Elevation Dataset (NED) Shaded Relief Imagery, 1:24,000



Legend

Conserved Lands	Water Features	Rivers/Streams	Roads
■ Federal Agency	■ Reservoir	— Stream	— State Route
■ State Agency	■ Wetland	— Intermittent Stream	— Local Road
■ Municipal Agency	■ River/Stream	■ Other Water Feature	— Local Road - State Maintained
■ Private Organization	■ Lake/Pond	■ Dam	— Rail Lines
■ Unknown			□ Parcel Boundaries
			□ Town Boundaries



Nashua Regional Planning Commission
 115 Main Street PO Box 847 Nashua, NH 03061
 www.nashuarpc.org

Maps prepared by the Nashua Regional Planning Commission are for planning purposes only. NRPC uses data gathered from multiple sources at various scales of accuracy. No warranties, expressed or implied, are provided for the data herein, its use, or its interpretation.

Prepared by NRPC GIS, 05/07
 Project Location: J:\GIS\Projects\Town_map\Amherst\Amherst_Conserved_Lands_environmental_features.mxd